

Elevated Landscaped Pedestrian Deck near MTR Kwun Tong Station

Project Scope:

- (a) construction of a covered elevated landscaped pedestrian deck of about 120 metres in total length;
- (b) carrying out associated slopes, walkways, drainage, landscaping works and other ancillary works; and
- (c) implementation of environmental mitigation measures for the proposed works.

- Commencement date:
31 Aug 2022
- Anticipated completion date:
End of 2025

For more information, please visit our website by scanning the QR code:



近港鐵觀塘站之高架園景行人平台

工程範圍：

- (a) 興建 1 個總長度約 120 米的有蓋高架園景行人平台；
- (b) 進行相關的斜坡、行人道、渠務、園景美化工程和其他附屬工程；以及
- (c) 就擬議工程實施緩解環境影響措施。

- 工程開始日期：2022 年 8 月 31 日
- 預計竣工日期：2025 年年底

請掃描網站二維碼以獲取更多資訊：



合約編號：ED/2021/01

近港鐵觀塘站之高架園景行人平台

Contract No. : ED/2021/01
Elevated Landscaped Pedestrian Deck near MTR Kwun Tong Station

(詳情請參閱背頁的平面圖)
(For details, please refer to the layout plan at the back.)



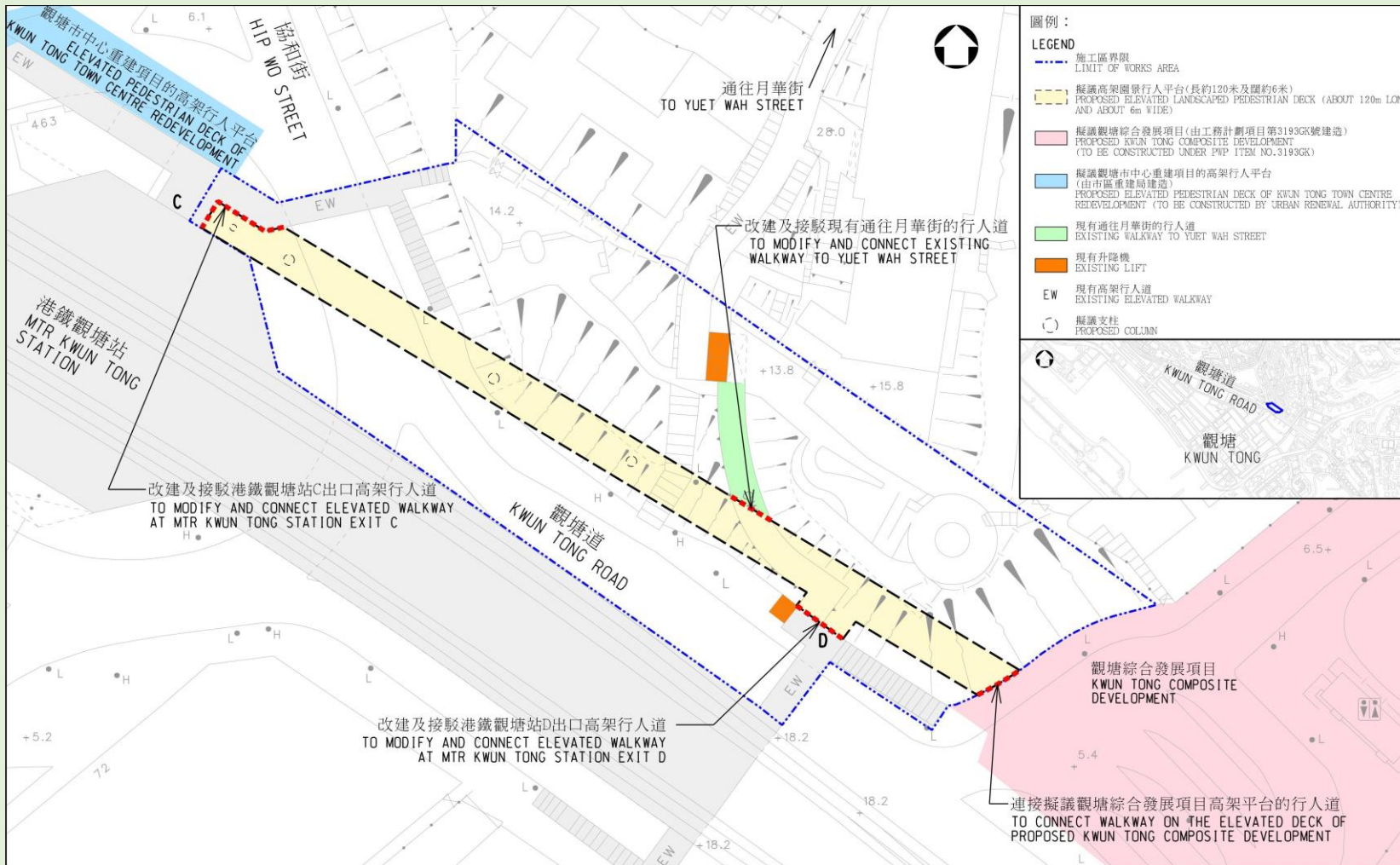
土木工程拓展署
Civil Engineering and
Development Department



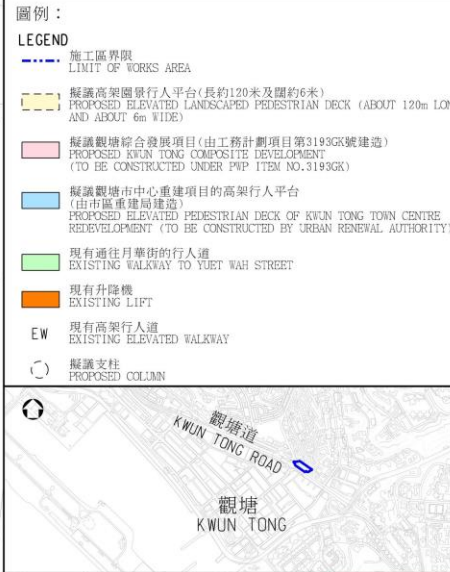
豐利建築工程有限公司
KULY CONSTRUCTION & ENGINEERING CO., LTD.

近港鐵觀塘站之高架園景行人平台

Elevated Landscaped Pedestrian Deck near MTR Kwun Tong Station



平面圖 (Layout Plan)



聯絡我們

- 如對閣下造成不便，敬請原諒。
- 如有查詢，請聯絡我們。

24 小時查詢熱線：
5989 0362

Contact Us

- Sorry for any inconvenience caused.
- For enquiry, please contact our 24-hour hotline :

5989 0362

